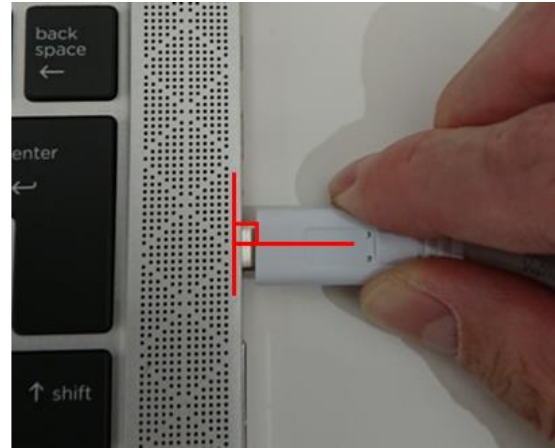
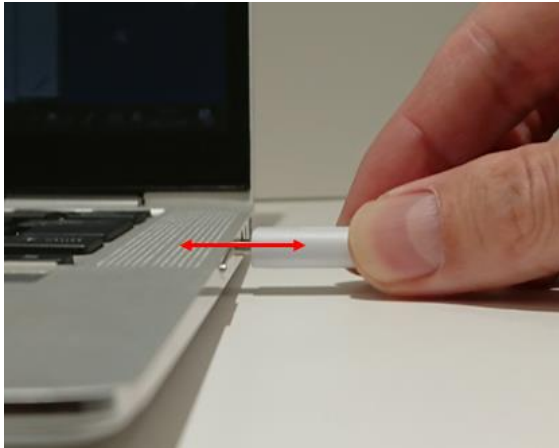


How do I properly plug in and unplug the USB Type-C cable?

To avoid damaging the USB Type-C cable connector and the USB Type-C port, hold the cable by its connector and plug it straight in and out.



Please note that the cable or PC may be damaged if it is plugged in or unplugged in the following ways.

- When you plug in or unplug the cable connector at an angle.



- When you pull on the cord to remove the cable.



- When you insert the cable deeper than necessary.

